

JANUARY GFORCE™ SIRES

KEANU

7H016763 S-S-I HAYK KEANU-ET
8403252556769 99% RHA-I TR TP TC TM TV TL TY TD
DMS: 234,345 aAa: 423 B-Casein: A2A2 K-Casein: AB MWT



KEANU

S: Welcome-Tel Taos HAYK-ET
D: S-S-I Gmby Hodelia 2321-ET (VG-86-VG-MS)
MGS: RMD-Dotterer SSI GAMEDAY-ET
MGD: Cookiecutter Hodelia-ET (VG-86-VG-MS)
MGGS: Fustead S-S-I SOLUTION-ET

CDCB-S Genomic Evaluation			(12/23)	
Milk	+1,997	79%R	Net Merit (73%R)	+\$1,117
Protein	+0.05%	+76	DWPS*	+\$1,128
Fat	+0.07%	+97	Cheese Merit	+\$1,133

CDCB-S/HA Genomic Evaluation			(12/23)	
Type	+1.63	UDC +1.35	FLC +0.19	BWC +0.64 78%R GTPI* +3113

Health and Fertility			(12/23)	
SCS	2.63	75%R	MAS +3.2	70%R PL +6.6 74%R
LIV	+2.3	71%R	DPR -0.2	74%R HCR +2.0 72%R
CCR	+2.1	73%R	FI +0.5	73%R SCE 2.3% 63%R
WT\$*	+\$67		DCE 2.4%	57%R DSB 3.9% 55%R
CW\$*	-\$54		HHP\$*	+\$1,240

	-2	-1	0	1	2	
Stature						0.69 T
Dairy Form						0.63 O
Strength						0.74 S
Body Depth						0.44 D
Rump Width						1.21 W
Rump Angle						0.42 S
Rear Legs Side View						0.81 S
Rear Legs Rear View						0.15 S
Foot Angle						0.47 S
Feet and Legs Score						0.38 H
Fore Udder Attachment						1.84 S
Rear Udder Height						1.46 H
Rear Udder Width						2.20 W
Udder Cleft						0.50 S
Udder Depth						0.80 S
Front Test Placement						1.34 C
Rear Test Placement						1.32 C
Test Length						0.83 S

Breeder: Select Sires, Inc., Plain City, OH

Born: 9/29/2022

FROSTING-P

7H016931 FB BEYOND RMR FROSTING-P-ET
8403253835373 99% RHA-I TR PO TC TM TV TL TY TD
DMS: 246,126 aAa: 435 B-Casein: A2A2 K-Casein: BB MWT



S: Stantons Remover PP
D: FB 436820 Monum 661081-P-ET
MGS: Bomaz Monument-P-ET
MGD: FB 7394 Achiever 436820-ET
MGGS: ABS Achiever-ET

CDCB-S Genomic Evaluation			(12/23)	
Milk	+762	79%R	Net Merit (73%R)	+\$909
Protein	+0.08%	+46	DWPS*	+\$1,073
Fat	+0.27%	+107	Cheese Merit	+\$925

CDCB-S/HA Genomic Evaluation			(12/23)	
Type	+1.10	UDC +1.01	FLC +0.91	BWC -0.03 77%R GTPI* +2878

Health and Fertility			(12/23)	
SCS	2.86	75%R	MAS +0.3	71%R PL +4.2 74%R
LIV	+2.3	71%R	DPR -0.4	74%R HCR +0.8 72%R
CCR	+0.4	73%R	FI -0.3	73%R SCE 1.9% 61%R
WT\$*	+\$104		DCE 2.0%	57%R DSB 3.9% 55%R
CW\$*	+\$21		HHP\$*	+\$914

	-2	-1	0	1	2	
Stature						0.40 T
Dairy Form						1.26 O
Strength						0.44 S
Body Depth						0.60 D
Rump Width						0.64 W
Rump Angle						0.93 H
Rear Legs Side View						0.22 S
Rear Legs Rear View						1.06 S
Foot Angle						0.59 S
Feet and Legs Score						0.91 H
Fore Udder Attachment						1.35 S
Rear Udder Height						1.44 H
Rear Udder Width						1.56 W
Udder Cleft						0.57 S
Udder Depth						0.62 S
Front Test Placement						0.12 C
Rear Test Placement						0.04 C
Test Length						1.24 L

Breeder: FB Genetics, Dalhart, TX

Born: 11/15/2022

SELECT SIRES

YOUR SUCCESS *Our Passion.*

Phone: (614) 873-4683 ♦ www.selectsires.com

= gender SELECTED*

= Mastitis ResistantPRO*

= FeedPRO*

= RobotPRO*

*Mastitis ResistantPRO, FeedPRO, RobotPRO, HHP\$, Your Success Our Passion. and the Select Sires logo are registered trademarks of Select Sires Inc., Plain City, OH. TPI is a registered trademark of Holstein Association USA. DWPS and WT\$ are registered trademarks of Zoetis Inc., and its affiliates and/or its licensors. Zoetis wellness values are based on December 2023 Zoetis data. *CW\$ is a trademark of Zoetis Inc., and its affiliates and/or its licensors. GForce and gender SELECTED are trademarks of Select Sires Inc. All gender SELECTED semen is processed using Ultraplus™ Technology. Ultraplus is a trademark of STGen LLC.

JANUARY GFORCE™ SIRES

PTRT-RED

7H016958 TRENT-WAY-JS RB PTRT-RED-ET
8403240737671 99% RHA-I TP TC TM TL TD
DMS: 345,456 aAa: 321 B-Casein: A1A2 K-Casein: BB MWT



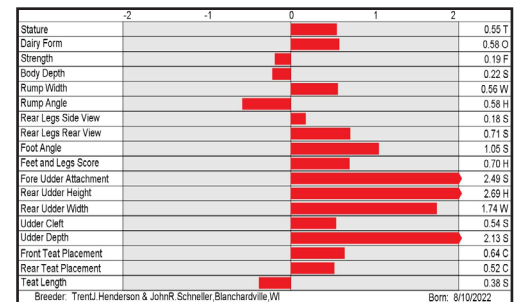
MORNINGVIEW S PAISLE-RED-ET (VG-85-EX-MS)
Dam of PTRT-RED

S: Bosside Rubel REBEL-RED-ET
D: Morningview S Paisle-Red-ET (VG-85-EX-MS)
MGS: Schreur Shimmer-ET
MGD: Morningview Resolve 5753-ET (EX-90-EX-MS)
MGGS: Blumenfeld Jedi RESOLVE-ET

CDCB-S Genomic Evaluation			(12/23)
Milk	+1,338	79%R	Net Merit (73%R) +\$776
Protein	+0.03%	+51	DWPS* +\$822
Fat	-0.04%	+40	Cheese Merit +\$788

CDCB-S/HA Genomic Evaluation			(12/23)
Type	+1.55	UDC +2.02	FLC +0.65 BWC -0.21 78%R GTPI* +2814

Health and Fertility			(12/23)
SCS	2.68	75%R	MAS +2.1 70%R PL +5.5 74%R
LIV	+3.3	71%R	DPR +2.3 74%R HCR +1.5 71%R
CCR	+2.1	74%R	FI +1.8 73%R SCE 2.2% 63%R
WT\$	+\$172		DCE 2.7% 57%R DSB 5.5% 55%R
CW\$	-\$48		HHP\$* +\$870



LOYAL-P

7H016965 OCD CIRRUSS LOYAL-P-ET
8403251665461 99% RHA-I TR TC TM TV TL TY TD
DMS: 135,123 aAa: 324 B-Casein: A2A2 K-Casein: AB MWT

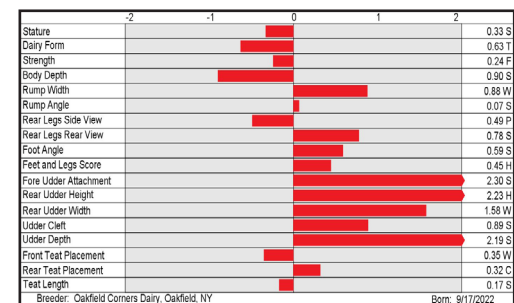


S: Winstar Perfect CIRRUSS-P-ET
D: OCD Highdmd Lexus 64781-ET (GP-81)
MGS: Adaway HIGH DEMAND 2390-ET
MGD: OCD Legacy Lexus 49733-ET (VG-86-VG-MS)
MGGS: Pine-Tree CW LEGACY-ET

CDCB-S Genomic Evaluation			(12/23)
Milk	+508	79%R	Net Merit (73%R) +\$921
Protein	+0.10%	+43	DWPS* +\$767
Fat	-0.21%	+79	Cheese Merit +\$942

CDCB-S/HA Genomic Evaluation			(12/23)
Type	+1.23	UDC +2.03	FLC +0.64 BWC +0.13 79%R GTPI* +2906

Health and Fertility			(12/23)
SCS	2.77	75%R	MAS +2.6 70%R PL +6.3 74%R
LIV	+1.9	71%R	DPR +0.8 73%R HCR +3.3 71%R
CCR	+3.0	73%R	FI +1.4 73%R SCE 2.0% 63%R
WT\$	-\$6		DCE 2.3% 56%R DSB 3.6% 54%R
CW\$	-\$55		HHP\$* +\$994



YOUR SUCCESS *Our Passion.*

Phone: (614) 873-4683 ♦ www.selectsires.com

=gender SELECTED*

=RobotPRO*

=GrazingPRO*

RobotPRO, GrazingPRO, HHP\$, Your Success Our Passion, and the Select Sires logo are registered trademarks of Select Sires Inc., Plain City, OH. TPI is a registered trademark of Holstein Association USA. DWPS and WT\$ are registered trademarks of Zoetis Inc., and its affiliates and/or its licensors. Zoetis wellness values are based on December 2023 Zoetis data. *CW\$ is a trademark of Zoetis Inc., and its affiliates and/or its licensors. GForce and gender SELECTED are trademarks of Select Sires Inc. All gender SELECTED semen is processed using Ultraplus* Technology. Ultraplus is a trademark of STGen LLC.

JANUARY GFORCE™ SIRES

HARLEY

7H017039 DUCKETT PEARCE HARLEY-ET
8403260842992 99% RHA-I TR TP TC TM TV TL TY TD
DMS: 126,123 aAa: 315 B-Casein: A2A2 K-Casein: BB MWT



S-S-I DOC HAVE NOT 8784-ET (EX-96-EX-MS-DOM)
Dam of HARLEY

S: S-S-I BG Perfect PEARCE-ET
D: S-S-I Doc Have Not 8784-ET (EX-96-EX-MS-DOM)
MGS: Woodcrest King DOC (EX-90)
MGD: Fly-Higher Jedi Havenot-ET (VG-86-VG-MS)
MGGS: S-S-I Montross JEDI-ET (EX-93-GM)

CDCB-S Genomic Evaluation		(12/23)	
Milk	+1,028	80%R	Net Merit (74%R) +\$772
Protein	+0.05%	+47	DWPS* +\$836
Fat	+0.07%	+60	Cheese Merit +\$783

CDCB-S/HA Genomic Evaluation		(12/23)	
Type	+2.16	UDC +2.06	FLC +0.65 BWC +1.18 79%R GTPI* +2882

Health and Fertility		(12/23)	
SCS	2.93	76%R	MAS +1.5 71%R PL +5.5 75%R
LIV	+1.4	71%R	DPR +2.6 74%R HCR +2.9 72%R
CCR	+4.3	74%R	FI +2.6 74%R SCE 2.1% 63%R
WT\$*	+\$137		DCE 1.8% 57%R DSB 5.1% 55%R
CW\$*	+\$5		HHP\$* +\$888



CUSTAR

507H016603 HOUIN SSI OVERDO CUSTAR-ET
8403252802659 99% RHA-I TR TP TC TM TV TL TY TD
DMS: 345,135 aAa: 234 B-Casein: A1A2 K-Casein: AB MWT



CUSTAR

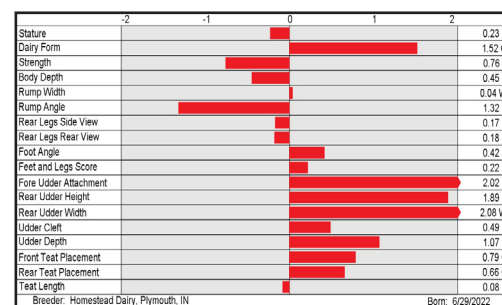
AVAILABLE ONLY IN SEXED SEMEN

S: Ladys-Manor Overdo-ET
D: Houin S-S-I 321 555-ET (GP-82)
MGS: Fly-Higher MOONSHINER-ET
MGD: S-S-I HD 12080 321-ET
MGGS: Pine-Tree CW LEGACY-ET

CDCB-S Genomic Evaluation		(12/23)	
Milk	+999	80%R	Net Merit (73%R) +\$1,181
Protein	+0.08%	+53	DWPS* +\$1,275
Fat	+0.24%	+107	Cheese Merit +\$1,202

CDCB-S/HA Genomic Evaluation		(12/23)	
Type	+1.07	UDC +1.75	FLC +0.21 BWC -1.34 78%R GTPI* +3103

Health and Fertility		(12/23)	
SCS	2.61	75%R	MAS +2.8 70%R PL +7.4 74%R
LIV	+1.4	71%R	DPR +1.5 74%R HCR +3.2 72%R
CCR	+3.2	73%R	FI +1.9 73%R SCE 1.4% 63%R
WT\$*	+\$73		DCE 1.9% 57%R DSB 4.9% 55%R
CW\$*	+\$28		HHP\$* +\$1,194



SELECT SIRES



YOUR SUCCESS Our Passion.

Phone: (614) 873-4683 ♦ www.selectsires.com

*Mastitis ResistantPRO, FeedPRO, RobotPRO, GrazingPRO, HHP\$, Your Success Our Passion, and the Select Sires logo are registered trademarks of Select Sires Inc., Plain City, OH. TPI is a registered trademark of Holstein Association USA. DWPS and WT\$ are registered trademarks of Zoetis Inc., and its affiliates and/or its licensors. Zoetis wellness values are based on December 2023 Zoetis data. "CW\$ is a trademark of Zoetis Inc., and its affiliates and/or its licensors. GForce, Showcase and gender SELECTED are trademarks of Select Sires Inc. All gender SELECTED semen is processed using Ultraplus Technology. Ultraplus is a trademark of STGen LLC. Limitations and Conditions of Sale: gender SELECTED semen shall be used only for the single insemination of one female bovine during natural ovulation with the intent to produce a single offspring unless specifically approved on an individual customer basis by Sexing Technologies in writing. As a condition of purchasing gender SELECTED semen, the purchaser agrees that gender SELECTED semen will not be reverse sorted or re-sorted unless specifically permitted, in advance, on a case-by-case basis by Select Sires in writing. Select Sires intends to monitor the use of the gender SELECTED semen and vigorously enforce these restrictions on use. Please see <http://www.selectsires.com/designations/genderselected.html> for additional details.

JANUARY GFORCE™ SIREs

TRIP-PP

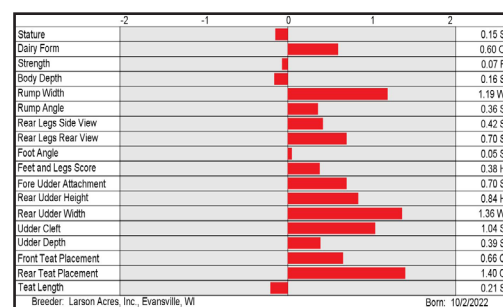
14H016751 LARS-ACRES SSI C TRIP-PP-ET
8403248215007 99% RHA-I TR PP TC TM TV TL TY TD
DMS: 456,345 aAa: 435 B-Casein: A2A2 K-Casein: BB MWT



S-S-I LA 28180 22888-ET (VG-85-VG-MS)
Grandam of TRIP-PP

S: Winstar Perfect CIRRUS-P-ET
D: Lars-Acres S-S-I 25766-ET
MGS: TTM SS Renegade EXTRA-P-ET
MGD: S-S-I LA 28180 22888-ET (VG-85-VG-MS)
MGGS: Pine-Tree CW LEGACY-ET

CDCB-S Genomic Evaluation			(12/23)	
Milk	+1,143	79%R	Net Merit (73%R)	+\$913
Protein	+0.04%	+47	DWPs*	+\$945
Fat	+0.15%	+87	Cheese Merit	+\$923
CDCB-S/HA Genomic Evaluation			(12/23)	
Type	+0.92	UDC +0.94	FLC +0.49	BWC -0.18 78%R GTPI* +2816
Health and Fertility			(12/23)	
SCS	2.85	75%R	MAS +2.7	70%R PL +5.8 74%R
LIV	+2.0	70%R	DPR -0.7	73%R HCR +1.5 71%R
CCR	+1.4	73%R	FI -0.3	73%R SCE 2.2% 62%R
WT\$*	+\$66		DCE 2.1%	56%R DSB 4.2% 54%R
CW\$*	+\$27		HHP\$*	+\$956



KERSH

614H016706 LARS-ACRES SSI KERSH-ET
8403248214970 99% RHA-I TR TP TC TM TV TL TY TD
DMS: 561,126 B-Casein: A2A2 K-Casein: AB MWT

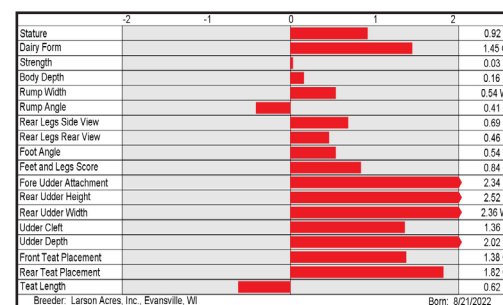


LARS-ACRES S-S-I 25603-ET (VG-85-VG-MS)
Dam of KERSH

AVAILABLE ONLY IN SEXED SEMEN

S: T-Spruce S-S-I BEETHOVEN-ET
D: Lars-Acres S-S-I 25603-ET (VG-85-VG-MS)
MGS: Fly-Higher MOONSHINER-ET
MGD: Preston S-S-I 5716 23054-ET (VG-88-VG-MS-DOM)
MGGS: S-S-I PR RENEGADE-ET

CDCB-S Genomic Evaluation			(12/23)	
Milk	+1,859	79%R	Net Merit (73%R)	+\$1,112
Protein	+0.03%	+67	DWPs*	+\$1,200
Fat	+0.06%	+89	Cheese Merit	+\$1,123
CDCB-S/HA Genomic Evaluation			(12/23)	
Type	+1.85	UDC +2.08	FLC +0.58	BWC -0.34 79%R GTPI* +3083
Health and Fertility			(12/23)	
SCS	2.74	75%R	MAS +1.9	70%R PL +7.2 74%R
LIV	+2.0	70%R	DPR +0.0	74%R HCR +2.1 72%R
CCR	+2.2	73%R	FI +0.6	73%R SCE 2.6% 63%R
WT\$*	+\$146		DCE 2.2%	57%R DSB 3.9% 55%R
CW\$*	-\$17		HHP\$*	+\$1,105



SELECT SIREs

YOUR SUCCESS *Our Passion.*

Phone: (614) 873-4683 ♦ www.selectsires.com



*FeedPRO, HHP\$, Your Success Our Passion, and the Select Sires logo are registered trademarks of Select Sires Inc., Plain City, OH. TPI is a registered trademark of Holstein Association USA. DWPs and WT\$ are registered trademarks of Zoetis Inc., and its affiliates and/or its licensors. Zoetis wellness values are based on December 2023 Zoetis data. *CW\$ is a trademark of Zoetis Inc., and its affiliates and/or its licensors. GForce and gender SELECTED are trademarks of Select Sires Inc. All gender SELECTED semen is processed using Ultraplus™ Technology. Ultraplus is a trademark of STGen LLC. Limitations and Conditions of Sale: gender SELECTED semen shall be used only for the single insemination of one female bovine during natural ovulation with the intent to produce a single offspring unless specifically approved on an individual customer basis by Sexing Technologies in writing. As a condition of purchasing gender SELECTED semen, the purchaser agrees that gender SELECTED semen will not be reverse sorted or re-sorted unless specifically permitted, in advance, on a case-by-case basis by Select Sires in writing. Select Sires intends to monitor the use of the gender SELECTED semen and vigorously enforce these restrictions on use. Please see <http://www.selectsires.com/designations/genderselected.html> for additional details.

JANUARY GFORCE™ SIREs

JX DRIVER {5}

7JE2180 JX VICTORY OVERALLS DRIVER {5}-ET
8403257224905 BBR 100 JH1F JNS-TF
DMS: 246,456 B-Casein: A2A2 K-Casein: BB



CDCB-S Genomic Evaluation			(12/23)	
Milk	+839	75%R	Net Merit (72%R)	+\$616
Protein	+0.08%	+48	Cheese Merit	+\$632
Fat	+0.15%	+74	CFP	+122

CDCB-S/AJCA Genomic Evaluation			(12/23)	
Type	+1.4	77%R	+17.4JUI*	GJPI* +163

Health and Fertility			(12/23)	
SCS	2.86	73%R	PL	+3.7 70%R
DPR	-1.6	67%R	HCR	+0.1 56%R
DWP\$*	+\$997		WT\$*	+\$155
M FVR	101	32%R	MAS	-1.3 56%R
HHP\$*	+\$667		ZMAS	106 39%R



JX VICTORY 49424 JIGGY 57473 {4}-ET (VG-83%)
Dam of JX DRIVER {5}

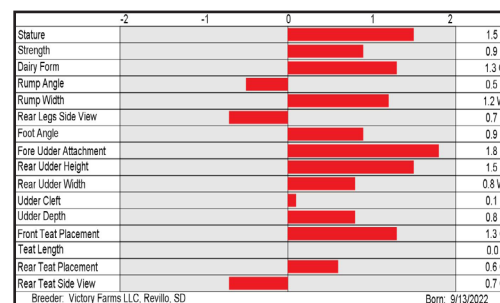
S: Rowleys 80 Caliban OVERALLS-ET

D: JX Victory 49424 Jiggy 57473 {4}-ET (VG-83%)

MGS: JX Kash-In Got Jiggy {6}-ET

MGD: JX Victory Viceroy Glenna 49424 {3} (VG-83%)

MGGs: CDF Viceroy-ET



DECHAMBEAU {5}

7JE2199 VICTORY WINDSOR DECHAMBEAU {5}
8403259012663 BBR 100 JH1F JNS-TF
DMS: 126,123 B-Casein: A1A2 K-Casein: BB



CDCB-S Genomic Evaluation			(12/23)	
Milk	+1,952	74%R	Net Merit (72%R)	+\$780
Protein	-0.04%	+63	Cheese Merit	+\$782
Fat	-0.04%	+86	CFP	+149

CDCB-S/AJCA Genomic Evaluation			(12/23)	
Type	+1.0	77%R	+8.4JUI*	GJPI* +160

Health and Fertility			(12/23)	
SCS	2.97	74%R	PL	+3.2 71%R
DPR	-1.9	69%R	HCR	+1.8 58%R
DWP\$*	+\$1,144		WT\$*	+\$171
M FVR	89	28%R	MAS	-2.3 58%R
HHP\$*	+\$672		ZMAS	107 37%R



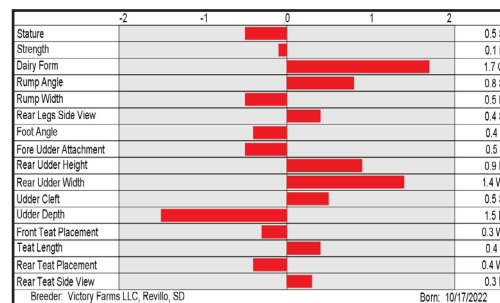
S: DG Bar WINDSOR-ET

D: JX Victory 51581 Chief 57736 {4} (VG-81%)

MGS: JX River Valley Chief {6}-ET

MGD: JX Victory 42862 Pogba 51581 {3}

MGGs: JX Faria Brothers POGBA {4}



YOUR SUCCESS *Our Passion.*

Phone: (614) 873-4683 ♦ www.selectsires.com



*RobotPRO, HHP\$, Your Success Our Passion, and the Select Sires logo are registered trademarks of Select Sires Inc., Plain City, OH. DWP\$ and WT\$ are registered trademarks of Zoetis Inc., and its affiliates and/or its licensors. Zoetis wellness values are based on December 2023 Zoetis data. *CW\$ is a trademark of Zoetis Inc., and its affiliates and/or its licensors. JPI and JUI are trademarks of the American Jersey Cattle Association. GForce and gender SELECTED are trademarks of Select Sires Inc. All gender SELECTED semen is processed using Ultraplus™ Technology. Ultraplus is a trademark of STGen LLC.

JANUARY GFORCE™ SIREs

JX CARACAL {6}

507JE2224 JX PRIMUS GEPPETTO CARACAL {6}-ET

8403242639174 BBR 100 JH1F JNS-TF

B-Casein: A2A2 K-Casein: BB



JX PRIMUS ENZO CHARLIZE 668 {4}-ET (VG-80%)

Grandam of JX CARACAL {6}

AVAILABLE ONLY IN SEXED SEMEN

S: Ahlem Gifted GEPPETTO {6}-ET

D: JX Primus Navidad Cindy 28599 {5}-ET

MGS: Pine-Tree Chrome NAVIDAD {6}-ET

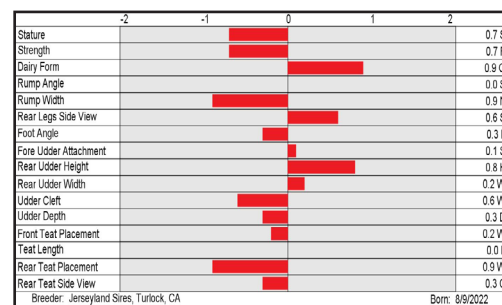
MGD: JX Primus Enzo Charlize 668 {4}-ET (VG-80%)

MGGs: JX Clover Patch Avon Enzo {3}

CDCB-S Genomic Evaluation				(12/23)
Milk	+885	74%R	Net Merit (72%R)	+\$844
Protein	+0.10%	+54	Cheese Merit	+\$862
Fat	+0.14%	+74	CFP	+128

CDCB-S/AJCA Genomic Evaluation				(12/23)
Type +0.9	78%R		+10.1JUI*	GJPI* +181

Health and Fertility				(12/23)
SCS	2.87	74%R	PL	+5.5 72%R
DPR	+0.0	70%R	HCR	+1.8 61%R
DWP\$*	+\$1,060		WT\$*	+\$138
M FVR	88	31%R	MAS	-2.5 61%R
HHP\$*	+\$733		ZMAS	105 38%R



MATEO

507JE2229 KASH-IN MATEO-ET

8403221920398 BBR 100 JH1F JNS-TF

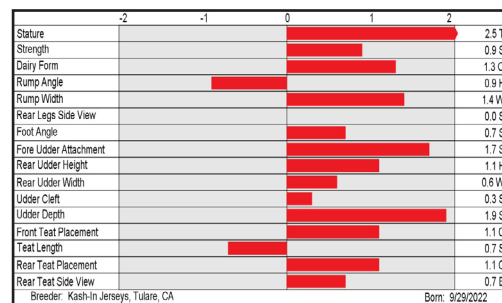
B-Casein: A2A2 K-Casein: BB



CDCB-S Genomic Evaluation				(12/23)
Milk	+976	74%R	Net Merit (72%R)	+\$673
Protein	+0.06%	+50	Cheese Merit	+\$687
Fat	+0.04%	+56	CFP	+106

CDCB-S/AJCA Genomic Evaluation				(12/23)
Type +1.4	78%R		+18.1JUI*	GJPI* +189

Health and Fertility				(12/23)
SCS	2.89	74%R	PL	+6.2 72%R
DPR	+0.0	70%R	HCR	+2.1 61%R
DWP\$*	+\$968		WT\$*	+\$121
M FVR	99	34%R	MAS	-0.2 61%R
HHP\$*	+\$824		ZMAS	106 42%R



AVAILABLE ONLY IN SEXED SEMEN

S: Valsigna Pine BLIZZARD

D: Kash-In Jiggy 65750 {6} (VG-84%)

MGS: JX Kash-In Got Jiggy {6}-ET

MGD: Kash-In Chrome 51239 {5} (E-90%)

MGGs: River Valley Cece CHROME-ET

SELECT SIREs



YOUR SUCCESS *Our Passion.*

Phone: (614) 873-4683 ♦ www.selectsires.com

*Mastitis ResistantPRO, FeedPRO, RobotPRO, GrazingPRO, HHP\$, Your Success Our Passion, and the Select Sires logo are registered trademarks of Select Sires Inc., Plain City, OH. DWP\$ and WT\$ are registered trademarks of Zoetis Inc., and its affiliates and/or its licensors. Zoetis wellness values are based on December 2023 Zoetis data. "CW\$" is a trademark of Zoetis Inc., and its affiliates and/or its licensors. JPI and JUI are trademarks of the American Jersey Cattle Association. GForce and gender SELECTED are trademarks of Select Sires Inc. All gender SELECTED semen is processed using Ultraplus® Technology. Ultraplus is a trademark of STGen LLC. Limitations and Conditions of Sale: gender SELECTED semen shall be used only for the single insemination of one female bovine during natural ovulation with the intent to produce a single offspring unless specifically approved on an individual customer basis by Sexing Technologies in writing. As a condition of purchasing gender SELECTED semen, the purchaser agrees that gender SELECTED semen will not be reverse sorted or re-sorted unless specifically permitted, in advance, on a case-by-case basis by Select Sires in writing. Select Sires intends to monitor the use of the gender SELECTED semen and vigorously enforce these restrictions on use. Please see <http://www.selectsires.com/designations/genderselected.html> for additional details.

JANUARY GFORCE™ SIREs

JX CHANCES {6}

614JE2182 JX VICTORY NICKLAUS CHANCES {6}-ET
8403259012209 BBR 100 JH1F JNS-TF
DMS: 126,561 B-Casein: A2A2 K-Casein: BB



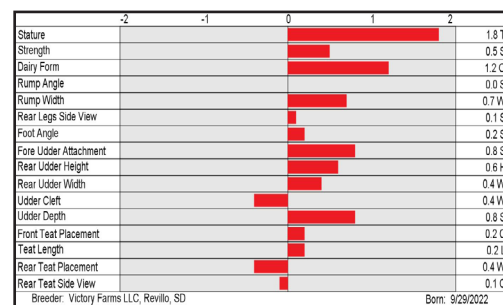
CDCB-S Genomic Evaluation			(12/23)
Milk	+1,106	75%R	Net Merit (72%R) +\$722
Protein	+0.03%	+48	Cheese Merit +\$734
Fat	+0.07%	+70	CFP +118

CDCB-S/AJCA Genomic Evaluation			(12/23)
Type	+1.1	78%R	+14.2JUI* GJPI* +180

Health and Fertility			(12/23)
SCS	2.83	74%R	PL +5.4 72%R LIV +2.8 62%R
DPR	+0.1	70%R	HCR +1.3 61%R CCR +1.0 69%R
DWP\$*	+\$1,007		WT\$* +\$132 CW\$™ +\$54
M FVR	91	34%R	MAS -1.5 60%R ZMAS 105 42%R
HHP\$*	+\$778		

AVAILABLE ONLY IN SEXED SEMEN

S: Victory Thrasher NICKLAUS-ET
D: JX Victory 50512 Jiggy 56544 {5} (VG-80%)
MGS: JX Kash-In Got Jiggy {6}-ET
MGD: JX Victory 45188 Priapus 50512 {4}
MGGS: JX Crosswind PRIAPUS {3}



BRECKEN

250JE2220 ELM-J S BRECKEN-ET
8403248055957 BBR 100 JH1F JNS-TF
B-Casein: A1A2 K-Casein: BB



CDCB-S Genomic Evaluation			(12/23)
Milk	+495	75%R	Net Merit (72%R) +\$332
Protein	-0.01%	+15	Cheese Merit +\$337
Fat	+0.03%	+30	CFP +45

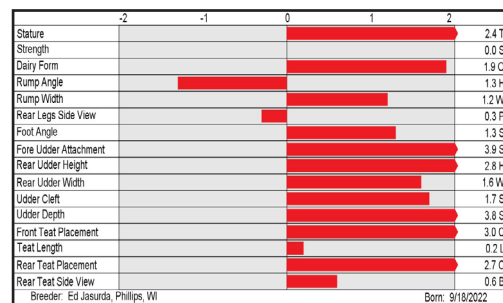
CDCB-S/AJCA Genomic Evaluation			(12/23)
Type	+2.4	78%R	+20.9JUI* GJPI* +103

Health and Fertility			(12/23)
SCS	2.78	74%R	PL +3.0 72%R LIV +0.4 62%R
DPR	-0.1	69%R	HCR +1.7 60%R CCR +0.9 69%R
DWP\$*	+\$538		WT\$* +\$231 CW\$™ -\$73
M FVR	97	32%R	MAS -0.3 60%R ZMAS 110 39%R
HHP\$*	+\$475		

S: Ehrhardt Solstice-ET
D: Fire-Lake FF Bionic Blessing-ET (VG-86%)
MGS: River Valley Buttons Bionic-ET
MGD: Ahlem Chekelo Blush 47526 (E-95%)
MGGS: Valsigna Marvel Chekelo



BRECKEN



SELECT SIREs



♀ = gender SELECTED™

🛡️ = Mastitis ResistantPRO®

🏆 = Showcase*

🌽 = FeedPRO®

🤖 = RobotPRO®

YOUR SUCCESS Our Passion.

Phone: (614) 873-4683 ♦ www.selectsires.com

*Mastitis ResistantPRO, FeedPRO, RobotPRO, HHP\$, Your Success Our Passion, and the Select Sires logo are registered trademarks of Select Sires Inc., Plain City, OH. DWP\$ and WT\$ are registered trademarks of Zoetis Inc., and its affiliates and/or its licensors. Zoetis wellness values are based on December 2023 Zoetis data. "CW\$" is a trademark of Zoetis Inc., and its affiliates and/or its licensors. JPI and JUL are trademarks of the American Jersey Cattle Association. GForce, Showcase and gender SELECTED are trademarks of Select Sires Inc. All gender SELECTED semen is processed using Ultraplus™ Technology. Ultraplus is a trademark of STGen LLC. Limitations and Conditions of Sale: gender SELECTED semen shall be used only for the single insemination of one female bovine during natural ovulation with the intent to produce a single offspring unless specifically approved on an individual customer basis by Sexing Technologies in writing. As a condition of purchasing gender SELECTED semen, the purchaser agrees that gender SELECTED semen will not be reverse sorted or re-sorted unless specifically permitted, in advance, on a case-by-case basis by Select Sires in writing. Select Sires intends to monitor the use of the gender SELECTED semen and vigorously enforce these restrictions on use. Please see <http://www.selectsires.com/designations/genderselected.html> for additional details.